

# Britannia

## RENEWAL



Vision and Directions Open House  
September 23, 12 – 4 pm

Event Report

## SUMMARY

Britannia Community Services Centre and Britannia Renewal Partners hosted a Visions and Directions Open House on September to present and confirm the input received through project's seven-month Visioning stage. The event asked participants to review the engagement summaries that were organized in two overarching vision areas (Indigenous Vision, Shared Values) and several programmatic areas (Food Hub, Library, Social Development, Arts + Culture, Recreation, Shared Public Space, Public Realm, Outdoor Play + Recreation). Participants were also invited to review notes from the Housing Forum held on the Thursday evening prior to the Open House and to provide their own feedback on the potential of including housing on the Britannia site.

With Partner program staff providing additional facilitation support, participants were asked:

- *Did we hear you right?*
- *Is there anything missing?*

Comments were recorded on sticky notes by facilitators and placed next to the station poster for other visitors to read. Participants were also invited to fill out their own sticky notes.



The event was held in Gym D. A central station in the Napier plaza welcomed people to the event and to direct Library, Ice Rink and Rec Centre visitors (the pool was closed during September) to the gym. The event included performances by the Greenhorn Band and the Morris Dancers, both of whom rehearse at Britannia. Britannia Centre volunteers helped staff the event with project consultants and City of Vancouver staff, and provided light refreshments.



During the event, Gym D also hosted a craft sale for victims of the Ashcroft Wildfire and Kindergym. Parents and craft sale shoppers took in some of the open house activities.

Approximately 120 people attended the open house over the course of the day.

The event included two, one-hour summary presentations which provided a broad overview and summary of the project's Vision stage.

## Shared Values

- Equality
- Respect for nature
- Unity
- Harmony
- “Don’t try to do too much, pick what people need/not want.”
- “Did you hear it right? Not if multi-purpose “efficiencies” replace and push out our current spaces where we build and enjoy community.”
- “Be aware of people with problems now.”
- “LGBTQ, etc. won’t feel safe unless we see something that says we are ex: rainbow stickers.”
- “Yes, more LGBTQ support. Ex: rainbow walkway”
- “Overall View: Use intersectional lens to include all, ensure LGBTQers are safe, seniors space, indigenous space.”
- “Support seniors with a dedicated space adjoining to the kitchen. Big enough for many kinds of activities.”
- “Seniors will be 25% of population. Will need universal access to pool, etc. Differently abled queer, indigenous, etc.”
- “Don’t get the cart before the horse. Britannia’s value is on sense of community belonging. Programming is a vehicle for that. Don’t shuffle us around in service of multi-use.”
- “Diversity can be expanded to LGBTQ2S, many living here.”
- “We need a larger dedicated program space for elders/seniors! We are burst at the seams right now!
- “Return It recycling depot, maybe have small one beside Centre somewhere. Some people have no can, then can dropped it off around?”
- “Concerns around assumption that seems to be here that multi-use is the best tool for Britannia is it? As the saying goes “ if your favorite tool is a hammer, everything looks like a nail.” I’m watching, and experiencing myself at the frustration and disorientation myself that takes place in other multi-use centers, and already here when community is being built through a program (i.e. A craft being done together) and it gets closed down because of scheduling for another group, instead of coming to a natural conclusion. We need dedicated spaces where community is as important as programming.”

## Indigenous Vision

- Inclusion – Mutual respect + Understanding – Story Telling
- Love mentorship idea – residency for artists, elders
- Language – Use new landscape as a learning tool to identify indigenous names and uses (food, medicinal) of indigenous plants on site. This would mean developing and supporting local “story tellers” with indigenous botanical knowledge. Consider oral tradition (of First Nations) in transfer and sharing of indigenous plant knowledge/natural world to site users + site visitors.
- “Be open, understanding + caring, sincere”
- “Create welcoming educational opportunities for those of us who would like to learn more about aboriginal culture + history.”

- “Donate land back/under band management”
- “To all facilities/spaces – Indoor/Outdoor Re + Re: Respect, Reconciliation, Recognition = Renewal
- “Multi-purpose spaces only will lead to endless conflicts + lost opportunities.”
- “Indigenous Vision design + programming LEAD to renewal = Recognizing this is Coast Salish Land, Co-management = Council of Elders.”
- “To honor our indigenous elders + young indigenous and have specific programming.”
- “Definitely support changing the name.”
- “Dedicated indigenous cultural space for the aboriginal community to invite wider community to participate.”
- “For all our people of every nation to share always our livelihood our ways!”
- “Grateful as a non-indigenous woman to be welcomed in indigenous programming – learn from their values.”
- “Glad to hear reconciliation is a strongly held value in GW! I hope to see this embraced from language to learning, to respect for land, to space design, to programming, to leadership and governance.”
- “Because of health + use of equipment for elders – Elders + seniors require more space.”
- “Elders/seniors require dedicated attention as well.”
- “We need a dedicated program space for elders that is larger than the lounge allocated on the proposed plan!”
- “We need space, BIG space for elders/seniors. 55+ Centre is bursting at the seams.”

## Food Hub

- “Local garden on-site to support proposed community kitchens.”
- “Connect with Vancouver Food Bank re: Food Hub + Food Skills programming.”
- “Make sure any kitchen space developed is accessible and adaptable.”
- “Yes to commercial kitchen! Would be a great community building asset.”
- “Coffee shop/snacks bar”
- “Potluck!”
- “Kitchen is very visible, not just a room in the corner. Kitchens are often where we gather, they are social space.”
- “Knowledge on healthy alternatives to food.”
- “I like the greenhouse idea. Can be used as a place to go breathe fresh air too.”
- “A large food hub but also smaller looking/food prep spaces. It’s hard for numerous groups to prep food at one time.”
- “Coffee/tea shop would be nice.”
- “Indigenous food knowledge/skills/workshops.”
- “Student breakfast program”
- “Lunch program”
- “Connect with Sole Foods group (Michael Ableman)”
- “Love the look of the huge room for sharing meals.”
- “Dedicated seniors/elders program space attached to a kitchen. We provide a lot of food for seniors/elders now.”
- “Bee hives, chicken coop, increased food growing education in schools, farm – scale collaboration.”

- “Open concept as much as possible – promote socializing.”
- “Good for bringing community together”
- “Expand the gardens, I like the one by the tennis courts.”
- “Good connection to multiple common spaces, connection to outdoor patio space, close proximity to garden areas.”
- “Large public gardens!”
- “Cooking class”
- “I like the rooftop garden idea – takes up less space”
- “Sharing meals – shouldn’t be public if toxicity is possible.”
- “Vancouver is so diverse. Good opportunity to expose people to different ways of living/eating.”
- “Education programs”
- “Like all of the food programs, corn fest, off the grill, herbal garden.”

## Library

- “Good for people without access; will be great!”
- “Love it!”
- “Adjustable activity spaces discourage ease of supervision.”
- “Could study space + inspiration lounge share space?”
- “Bigger space will be great.”
- “Space for public meetings, ideally without rental fee.”
- “Isn’t this what Youth Centre is for?”
- “Bookable study rooms. Incorporate art/art gallery.”
- “Film screening space.”
- “Great for students.”
- “Everyone welcome in all spaces.”
- “Audio/visual production spaces.”
- “Hurray, free Wi-Fi!”
- “Living library events where people tell their stories to those who “check them out”.”
- “Still keep art gallery aspect, i.e. newspapers, book clubs.”
- “Digital/video Lab – storytelling across age groups.”
- “Library tutoring for those who are fluent in spoken English.”
- “Archival/history in library room about the site + community. Film screen space, community meeting rooms, moveable walls, teen rooms, school café.”
- “Child friendly spaces, good for the elementary school.”
- “Mindful of bedbugs.”

## Social Development

- “Yes to daycare, afterschool care, flexible child-minding during activities.”
- “Make room for the young folks to have dances in a safe place. Cool lighting + sound system.”
- “Adult day care is a priority for Grandview Woodlands since the Lions Den closed. Three generations of seniors. We need to serve our eldest elders. My concern is that there will be catchment areas for access to adult day care as pressure for the service increases, we need one here!”

- “Aging population of seniors needs a bigger space, not a shared space because of disability.”
- “Healthcare – AML. Confidential space for nursing foot care + wellness program – health monitoring + consultations.”
- “Please have people that will listen to people coming in that may be upset.”
- “Need space to park walkers + scooters for seniors.”
- “A welcoming dedicated senior centre with seating that uses a common kitchen for the entire site.”
- “Two lines about seniors/elders, space is utterly inadequate given the huge amount of feedback we’ve contributed.”
- “The framework of these posters is about buildings + spaces, not people. Britannia is people.”
- “Seniors space – more programs for seniors, more space.”
- “Low rise village is good. (vs. big box c.c.)”
- “Make elders space more welcoming.”
- “Make a number of rooms [these are not the same as the art rooms] Agree there should not be too many functions/rooms, pick a couple of program functions per room. If there get to be more than 2 or 3 you need to make another room.”
- “Given the increasing demand for adult daycare spaces and the increasing need for these spaces, adult daycare space is important.”
- “Dedicated seniors space with trained staff – larger than 75 sq. ft.”
- “Yes to an adult day centre”
- “With largest aging population seniors need more than ever a dedicated seniors space!”
- “Because of acoustic + light + other specialized needs – seniors need designated program space as well as lounge for sitting together. We need enough space for both.”
- “Seniors demographics – statistics show ballooning needs for space for seniors over next 30 years. Let’s build it big enough for those numbers.”
- “Tiered” plazas, levels = more space.”
- “Pole dancing studio”
- “Running track lapping upper area (i.e. Around buildings like Lindsay Park, Calgary)”
- “Develop Britannia as a precinct with a vendors market. Support for small-home-based businesses
- “Alternative economy”
- “Granville Island is a precedent, Britannia can do this its own way.”
- “Need enough space dedicated to elders/seniors”
- “Separate senior area, more own space, more programming.”
- “Would like to see an area designated for seniors to get together, to learn new things, visit, exchange ideas, programs that are placed to continue.”
- “Indoor activities keep people engaged in bad weather.”
- “Separate space for seniors with shared kitchen spaces.”
- “Elders need an adequate space to support socializing, activities, storage, food prep & advocacy.”
- “The elders need a space of their own, the space they have now is too small.”
- “Green space! Picnic areas!”
- “We need dedicated spaces to support the development of youth given the youth in care crisis and lack of culture with relevant support.”

- “More senior space!”
- “Please do not deny elders their own area!”
- “Adult day centre, VCH partnership, flex space available to public evenings, weekends, and other weekdays.”
- “Yes, especially at Brit it is essential to have direct links to wellness/health facilities, services + practitioners.”
- “Emergency housing?”
- “Youth spaces needs to have a decent footprint/size”
- “Children/Youth areas, meditation room”
- “Universal washrooms”
- “Mental health services + have reduction too. Linkages.”
- “This is especially important as the gentrification keeps pushing them into Strathcona.”
- “Non-profit is great since childcare is staring to cost so much, high demand”
- “Adjustable space sizes”
- “Keep games in teen centre.”
- “We are all aging, 30-year plan! Grand vision: A safe, fun, Dementia Village (like in Sweden), Yes to Adult Day Health, yes to Minds in Motion – Alzheimer Care”
- “Fantastic Idea for elders in residence!”
- “Important to keep dedicated spaces, safe places.”
- “Keeps elderly feeling young + good chance for infants to make connections with elderly.”
- “Elders own recreation - a place to be together to create! It keeps us alive!”
- “Need space available for LGBTQ2S community.”
- “Elders need space where they can bring their walkers + scooters and this has to be their own space.”
- “Elders in residence + adult day centre are great ideas! These programs aren’t common and would set the cc apart.”
- “Flexible room use could group compatible activities, and free up space for uses with special equipment.”
- “As an elder I love our space to create + to be together.”
- “We need a seniors/elders dedicated program space that is larger – we have outgrown our current space!”
- “Current seniors space gives us a space, accessible + welcoming space to do programming + build community. It isn’t broken, so does not need fixing!”
- “Seniors with disabilities need space to bring their scooters + walkers.”
- “So good to see a confirmed seniors centre, needs to be the current square feet expanded to fit now + next 30 years.”
- “I write in support of “Claiming Space for Seniors” the presentation by BritPlan55+ to Britannia Planning + Development Committee. BritPlan55+ members have done the research and learned from the experiences in other communities that separate and dedicated space for a seniors centre is the only solution to providing for the needs of seniors. In my 20+ years of volunteer advocacy for seniors and Past-President of 411 Seniors Centre Society Board, I have seen that incorporating seniors’ programs within multipurpose structures has failed to provide their special needs.”



## Arts + Culture

- “A flexible creation space is a great idea”
- “Way more storage space”
- “Traditional dance space please!”
- “Dance + gymnastics space together”
- “Focus on incubator spaces”
- “Lots of theatre spaces nearby, too much competition”
- “An active outdoor space is a good choice”
- “Good idea!”
- “We don’t want to compete with things already nearby, theatres, etc.”
- “Concert venue”
- “Standalone art gallery and pottery studio, plus micro-studios!”
- “Develop Britannia as a precinct with support for local vendors. Ex: Local market spaces perhaps under an arcade (The Britannia version of Burlington Arcade in Mayfair)”
- “Are you creating something that already exists?”
- “Capoeira space”
- “Great community building opportunity”
- “Still need space/arts + culture, dedicated to intergenerational separation!”
- “Pole dancing studio”
- “Yes, yes, yes”
- “Focus on creation spaces!”
- “Are there enough resources for this? Will other areas suffer?”
- “Please more arts + culture space, rehearsal studio, exhibit, theatre, etc.”
- “For movies: wall curtains, fixed projection equipment + screen, black box would need to be multiuse for meetings and intimacy.”
- “Dance studios have unique needs, but few c.c.s. have dedicated space. This could fill a more area-wide gap.”
- “Portable bars in the dance studio area.”
- “Need arts space, studios for visual arts.”
- “Artist space with lots of natural light and inspiring views. Locate art studios on upper floors with views.”
- “Make space with equipment to share/storage.”
- “Community engagement in art, indigenous + other cultural arts.”
- “Library should continue to have a sunny aspect, the art/reading room is the best part of the present library.”
- “Have some medium size rooms with work table that can be moved around and easels, lighting, proper ventilation, sinks, safe paint disposal.”
- “We need larger seniors/elders dedicated program space with room to do arts/crafts.”
- “Multi-purpose Amphitheatre style facility like black box, modest in scale (50-60 people), particularly for simultaneous use, tiered seating\*, floor access for elderly/disabled users, community meetings, monthly activity group meetings, weekly movie night (10-15 people).”

## Shared Public Space

- “Own space for teenagers”



- “Child play areas, housing information board, art space – ever-changing mural/graffiti walls, kitchen space attached basically lots of mixed use in community living room.”
- “Sunny indoor place to hang out!”
- “Have good rules for people coming in”
- “Multi-purpose spaces” – Jennifer said in 2<sup>nd</sup> presentation they are “the grease that keeps it going, but it’s still a slippery slope!” If people feel shuffled around they might not feel like this is a “welcoming space where they belong.”
- “For people with hearing problems large space can cause problems – 1/3<sup>rd</sup> of 65+ have problems.”
- “Free store!”
- “An auditorium to be shared by the school + community.”
- “Ensure First Nations/Coast Salish Culture/Art/Language is front + centre!”
- “Storage space – storage boxes for homeless people who’d like to use library, pool, etc.”
- “Continuous indoor/outdoor”
- “We do need the 55+ space where we can all gather and do our crafts, etc.”
- “Need small cozy spaces. The Trout Lake re-design lost that feeling.”
- “Trout Lake has done a good job of shared space with different groups using the space with the large atrium.”
- “Open viewing concept!”
- “One big build building for everything.”
- “Would like to see a larger dedicated seniors’ area with very good lighting, with comfortable seating.”
- “Also include smaller, more intimate “outdoor rooms” with lots of green space, for people to sit and read, eat their lunch, etc. This was strongly suggested at an early meeting with a lot of agreement.”
- “Open spaces for mingling/meeting. Cozy/intimate spaces for conversation + reflection.”
- “Community Centre can be kept low-rise + accessible with glassed in walkways. Youth want safe hang space that is not indoors.”
- “Green, solar, and re-use heat.”
- “Not a side show, truly integrated breathing + lighting”
- “Lots of natural light!”
- “Message chair”
- “Separate buildings instead of one big building”
- “Auditorium/stage space to hold music, theatre, spoken word, speakers”
- “Balance of dedicated spaces and opening gathering spaces – also flexible + looks inviting”
- “More cozy spaces, less Trout Lake “safe spaces do not feel intimate due to lower income residents, personal + friendly”
- “Bike lock space, one of the city’s stations for bikes near here!”
- “Make a large space with windows + seating (like photo). People need a place to hangout. Vancouver is growing leaps + bounds. Make room for these coming.”
- “Value large welcoming open spaces, as well as “break out” spaces for meetings as stated. Very important to have the ability to create more intimate, somewhat “segregated” places so communities of affinity groups i.e., pre-teens, teens, can/will want to gather.”

- “Ensure it is up to the highest earthquake building standards. My family lives in Mexico and has just experienced what it is to go through major disaster. Community needs safe places to go to in the event of a disaster.”
- “More rooms for meetings also can be used as multi-purpose.”
- “Concourses are basically large hallways – hope that people will be able to have places to stop and be comfortable without feeling they are “in the way”.
- “Really enjoy + hope off the grill – teen prepared dinners for public on Wednesday + Friday nights – brings community together.”
- “Support viewing of activities – but we do not agree to be on display.”
- “Wi-Fi access”
- “Bike/equipment share, thingery”

## Recreation

- “Aquatics – great! Lanes + leisure, diving, large hot tub, steam room, moveable floor height.”
- “Fitness Centre components: cardio, weights (Free-weights + machines) + stretch room”
- “Pool, wave pool, gym, lots of space to stretch.”
- “Winter skate area, summer surfing”
- “Already need for more guards, would love to have somehow.”
- “More competitive! Sports facilities!”
- “A moveable floor pool.”
- “Indoor track”
- “Running... in the ice rink.”
- “Inside pickleball court, it’s the fastest growing sport.”
- “Increased focus on space + facilities for children’s sports, so programming can be increased. Active kids – so important!”
- “Weight room – with current weights or better!”
- “Natural light/big windows for facilities that can accommodate!”
- “Proper ventilation”
- “Dedicated gymnastics gym”
- “Like some of the concepts in the pictures. Lots of storage, a bit plus in multi-use.”
- “2<sup>nd</sup> Rink great for minor + hockey academy \_ drop in + figure skating.”
- “More green space”
- “Community gardens”
- “Quite serene gardens for connecting with nature away from the speed of tele-communications/traffic/busy streets/busy life.”
- “Sauna, sauna, sauna, sauna!”
- “Design later than needed as population is growing.”
- “Fitness Centre! Retain lots of natural light, airy feel. Dedicate stretch room attached to F.C. larger than it is now (4x). Keep it open as long as possible during construction.”
- “More equipment geared towards seniors/mobility challenged individuals.”
- “People don’t necessarily like to be on display.”
- “2<sup>nd</sup> rink would be amazing!” “2 rinks – more program opportunities, ice rink upgraded/renovation.”
- “4x change rooms in ice rink for teams incoming/outgoing.”
- “Able to isolate for different groups “private swims”.

- “Close to youth spaces!”
- “More actual books!”
- “Natural light! Like this idea!”
- “Diving boards!”
- “Need women only time in gym!”
- “Laundry room, quiet space for pool, rink, fitness centre staff.”
- “Separate sauna (women/male)”
- “Bigger gym with light. The current gym feels like it is in a basement.. Indoor track would be awesome. A lot more space for weights and machines in Fitness Centre. Please do not do what they did for Trout Lake! (small) Room for spin classes, better hours. (open/close)”
- “Upgraded pool like the one at Hillcrest.”
- “2<sup>nd</sup> training rink under mainsheet.
- “Skate park/outdoor small pool.”
- “Covered running track.”
- “Dedicated gymnastics facility.”
- “Pool, gym/weight room, outdoor running track.”
- “Outdoor pool.”
- “Fitness centre, over looking pool, everyone welcome.”
- “Quiet working space for staff.”
- “More lighting in gym”
- “As you have to prioritize facilities for the budget + space restrictions, please do not forget how important active kids are. Gymnastics and multipurpose facilities are crucial!”
- “Larger stretching room”
- “Increase outdoor sport, space, tennis (w/ lights), basketball (w/lights), etc.”
- “Dedicated gymnastics facility.”
- “No outside lookie-loos.”
- “Gym that opens to the outdoors continued/expandable play area.”
- “Weights/equipment, I don’t see it on the list?”

## Outdoor Play + Recreation

- “Good sight lines + lighting.”
- “Room for rec therapy + massage.”
- “Outdoor pickle ball courts, it is a fast growing sport.”
- “Tennis courts”
- “How about a small outdoor pool (like a wading pool) for kids + everyone to put their feet in during hot summer months.”
- “Do not repeat, too many building now, one large building, more open space.”
- “Water feature like the Trout Lake stream for sand + water. Play dirt is good!”
- “Light outdoor running track for night running.”
- “Waterpark”
- “All shared with VSB?”
- “Do both! Not paved like cement – do it like an actual track!”
- “If yes, good!”
- “The field is slanted and full of holes – super dangerous + can easily be injured!”

- “Regulation length (marked) run track.”
- “Great to have a walking path for seniors. Make sure good resting places + with supports for backs.”
- “Space for bicycle polo.”
- “More green space.”
- “Outdoor fitness court.”
- “Are we still linked to VSB? This is key?”
- “Outdoor workout equipment – Great idea.”
- “Outdoor fitness circuit”
- “More green space”
- “Skateboard park”
- “Space for bicycle polo”
- “Consider re-purposing some of the school yards because people don’t have big families anymore (6-8 kids in the 1960’s vs. 1-3 kids in 2017)”
- “Outdoor circuit + outdoor 50 m pool”
- “Walking trails”
- “Art wall – that has community mural etc., changes regularly.”
- “Outdoor running track”
- “Walking track”
- “A high quality field with a rubber.... And trampoline”
- “Please keep the footprint as small as possible, while accommodating the many uses. Outdoor uses + natural areas need space too.”

## Public Realm

- “Gateway to GW can be Brit C.C if linked to Venables as entry, i.e. Housing for families, streets + plazas for entry. Venables rezoned (Southside) for live/work + stories, to animate + create entry to GW + Brit C.C) Brit C.C. rendered as catalyst.”
- “Centralized storage for events materials, i.e. tents, chairs, tables, etc.”
- “How about an apiary!”
- “Earthquake assembly points, earthquake evacuation routes, a “common” symbol.”
- “Bees, chickens, eggs, food security.”
- “Dog park!”
- “Safe place for all”
- “Outdoor pool, kiddy pool”
- “All spaces should be multi-use”
- “So far so good!”
- “As long as we have the budget, why not?”
- “Bike routes to Britannia need improving.”
- “18 Hectare urban forest, test big audacious vision, community centre + housing, embedded but not dominant, families, kids in Evan are underserved by parks/green space. (%)”
- “Like Terra Nova Park in Richmond.”
- “Large space may operate too much traffic”
- “A “speakers” box for those who must “testify”.

- “Culturally significant trees throughout, i.e. Cedar, Douglas fir, etc.”
- “A living maze of value plants, a quiet, sacred place for all. “
- “Create as much green outdoor space. There will be some feelings of loss if it’s all gone. Having said that – we need a big public space for people to go to, including folks in the park.”
- “Use as an anchor, resurface Brit HSY school entry to West (Heritage)
- “Good for community”
- “Rubber track”
- “No access to rooftops! Safety!”
- “How about a coffee shop in the middle?”
- “Love the idea of a covered courtyard leading area!”
- “Need a stage and place for speakers, art, theatres, and electrical outlet.”
- “Community entrepreneurship.”
- “3 level drinking fountain for people, water bottles and pets.”
- “Picnic tables = outdoor hang out (Ask the city to put them back into Grandview Park)”

## Housing

- “Be sure to get affordable housing for everyone.”
- “City presentation slide at housing forum – their priorities for social housing is seniors/indigenous – let’s address that with this rare opportunity with price of land, this is the time to do it.”
- “Multi-generational housing will be an opportunity to build community of children, their parents + grandparents all being able to stay in the Grandview Woodlands neighbourhood don’t have to be related, intergenerational neighbourhood can become chosen family.”
- “The housing co-op model of engaging member participation could be adapted to this 100% affordable non-market social housing.”
- “No housing, 77 homes were taken to make a much needed community centre, please renew the centre, concentrate on that first. See additional property “Street frontage” for housing.”
- “Provide a sanctuary for homeless people.”
- “Put housing on top of the seniors centre – good synergy.”
- “Mixed housing, seniors space”
- “Hard definition of “Affordable non-market social housing” required.”
- “Family housing needed – at panes i.e. replicate entre nous femme.”
- “Having done a lot of reflection, I think that housing won’t work here. There is already too much + too complex.”
- “Makers space, common space, music/movement space, arts will be small.”
- “We need public low income housing as this public land/space.”
- “Tie housing to social agencies who can provide management + supervision.”
- “I’m all for what makes sense, no reason not to build social housing here.”
- “No housing, just a drop in the bucket to what is needed. Densify elsewhere \_ create space for people to gather.”

- “We desperately need social housing in GW. I have lived here for 30 years, and so many people I know have been forced out due to cost of rent. Our economic diversity is what makes Brit + GW great. Please, please more affordable housing.”
- “Housing for local artists + artisans needed. Temporary accommodation for visiting artists from rest of Canada + the world.”
- “There will be a need for at least one more community centre with housing, a development plan for “the slope” population growth – think “sister centre” soon!”
- “Nice scope but can make the scope of Britannia too large + unveiling.”
- “Yes, maximize affordable housing for: youth-in-care, families, seniors.”
- “We need subsidized 10 storey terraced housing ie. Seniors”
- “Subsidized live work /art studios!”
- “Public housing but no private market priced housing!”
- “Rent geared to income. I was so glad to hear that affordability would be based on 30% of income.”
- “Broader solution to housing is needed. Housing at this site feels ad hoc as a response to the crisis.”
- “But housing is thinking outside the box. It is part of a broader solution that makes use of diverse, accessible, affordable city owned land managed under a non-profit model.”
- “Housing would be great for those in the spaces, but not for others.”
- “Housing with ecological considerations in design i.e. passive solar, etc.”
- “Support is needed with housing. We are in a crisis – the need is greater.”
- “If housing component will be for seniors, all or mostly, why not put a seniors’ centre under it or adjoin a quality kitchen.”
- “Housing need to be mixed ages + abilities.”
- “Housing is very important but ... public space it will benefit too few.”
- “Don’t try to stuff too many dreams on the head of a pin.” Tom Green
- “Housing + public buildings are very difficult to design + set up for future operations. Really, we know this from experience.”
- “Maintain pedestrian neighbourhood, human scale, as found in historic Strathcona
- “No housing should be on the Britannia site. It is the community amenities for the whole GW community + needs to be kept for future generations. We need lots of social housing throughout the boarder neighbourhood.”



# Welcome!

V I S I O N   A N D   D I R E C T I O N S   O P E N   H O U S E

## WHAT'S HAPPENING TODAY?

The project team has spent the last seven months listening to community members about what they love about Britannia and what they would like to see in renewed Britannia. Today, we are reporting back on the common themes and values we heard.

These themes and values are organized into thematic service areas that Britannia provides today (e.g., social development, arts + culture, recreation).

## NOW WE WANT TO HEAR FROM YOU.

- *Did we hear you right?*
- *Is there anything missing?*

## PRESENTATIONS

Short presentations about the project will take place at 1pm and 3pm.





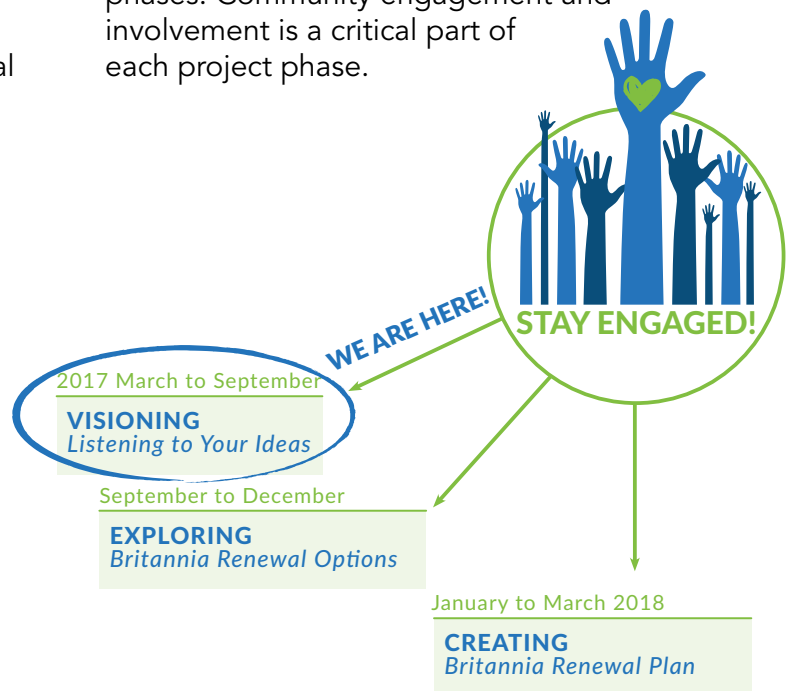
# PROJECT OVERVIEW

The City of Vancouver and Partners – Vancouver School Board, Vancouver Public Library, Vancouver Park Board, Britannia Community Services Centre – are working together on a project to renew and revitalize Britannia Community Services Centre and the larger Britannia site.

This community-guided project will result in a plan for the evolution of the site and its facilities for the next 30 years. When completed in early 2018, the Britannia Renewal Plan will include:

- **A community vision** guiding Britannia Renewal
- **Facilities space needs** identifying the different spaces for indoor and outdoor recreation, social development, arts & culture, and lifelong learning required to meet future needs at Britannia
- **A master plan** with phasing, outlining which components and features will be developed first and where over the multi-year renewal

The timeline illustrates the general project phases. Community engagement and involvement is a critical part of each project phase.



# ENGAGEMENT OVERVIEW

## HOW DID WE GET FEEDBACK?

Working with project Partners, a plan was developed to guide Britannia Renewal engagement to provide a range of in-person, casual and formal opportunities for Britannia users, neighbours and residents, and other important project partners to engage in the project's evolution at each stage—visioning, program verification and master planning. Engagement activities and events in the visioning phase included:



**Indigenous Engagement:** The Indigenous community was engaged in two specific focussed sessions with Indigenous groups, one-on-one conversations, and participation throughout the events and activities highlighted on the next poster.



**Focus Groups:** Eight in-depth visioning sessions with specific groups like Elders/seniors, youth, LGBTQ2S, and families.



**Space and Places Workshops:** Five workshops, each one focusing on specific program needs and space components—recreation, public space, cultural services, lifelong learning, community services.



**Open Houses:** Two larger, drop-in style events including this one!



**Speakers' Series:** Seven panel discussions in which passionate visionaries spoke about exciting topics and issues related to Britannia Renewal.



**B-LAB! (Britannia Renewal Lab):** A community living room in the Britannia Info Centre where people could learn about the project, read about all engagement activities, provide input and ideas.

In all, visioning activities to date have included over 50 different events and connected with over 2,500 people. Check out the Engagement Highlights poster to get a sense of how many activities we did.

## WHO PROVIDED FEEDBACK?

You did! A lot of people – 2,500 – provided feedback and input, including Britannia Community Centre users, neighbourhood service providers, community members, and project Partners (City, School Board, Park Board, Vancouver Public Library, Britannia Community Services Centre).

## WHAT HAPPENED AFTER FEEDBACK WAS COLLECTED?

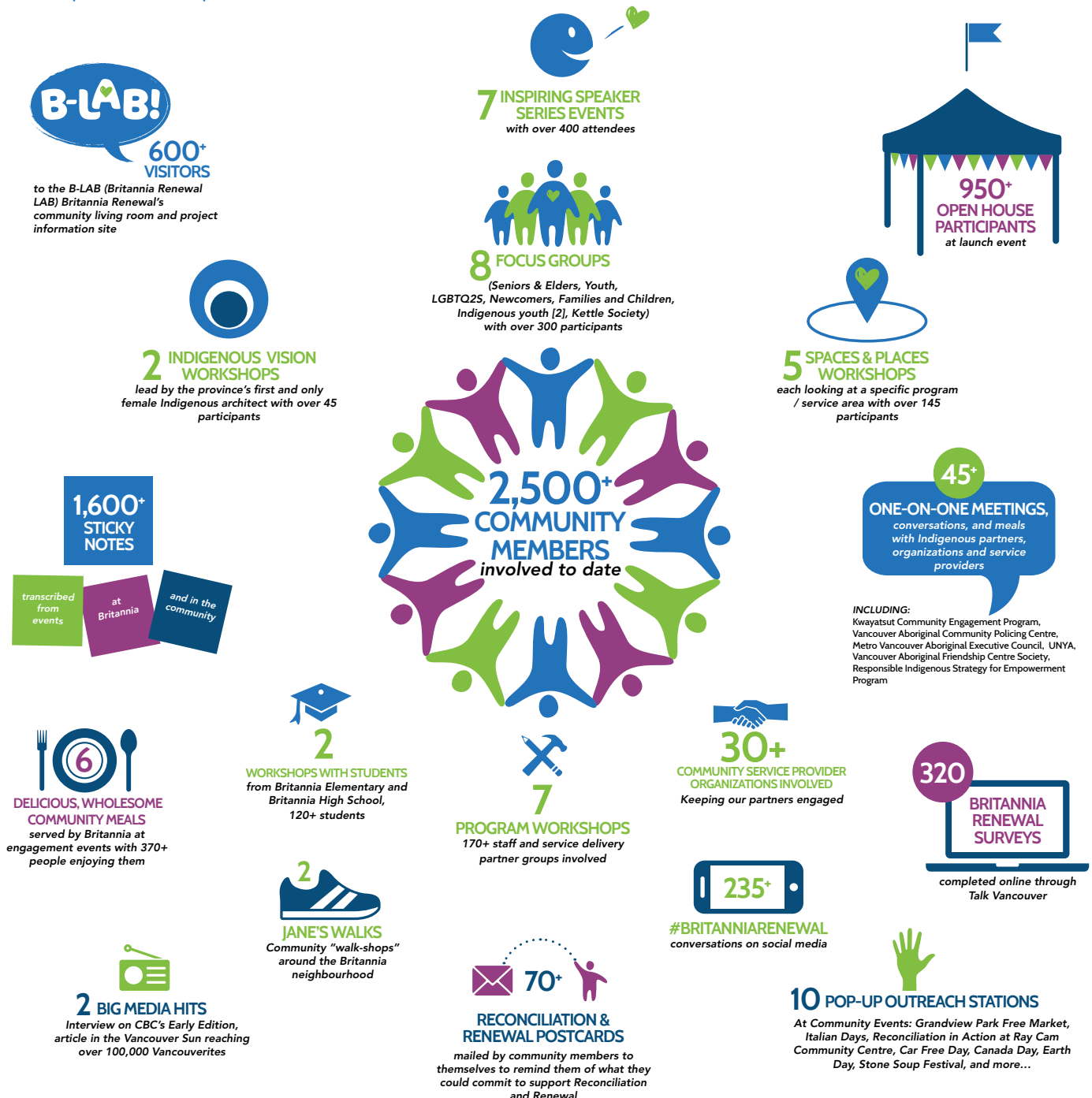
All outreach and input was transcribed and summarized. Common themes, shared ideas, and values were identified from each engagement. These summaries were provided to participants for feedback and review and all input was collected in a Community Conversations binder in the B-LAB. The project team is using this feedback to create a Vision for renewal upon which they will develop the Master Plan.

## WHAT DID WE HEAR?

Phase 1 engagement focused on two big questions: **What do you love about Britannia?** and **What would you like to see at a renewed Britannia in the future?** While we heard an incredible volume of ideas, many common and consistent themes, values and ideas emerged. For the most part, these were similar to those reported in earlier Britannia planning projects. Many of the values also already live in Britannia's operating principles and values today.

# ENGAGEMENT HIGHLIGHTS

This poster highlights just some of the engagement activities and events that took place the past seven months.



## THANK YOU BRITANNIA COMMUNITY

... FOR ALL YOUR TIME AND THOUGHTFULNESS IN CONTRIBUTING TO THE BRITANNIA RENEWAL PROJECT!



# INDIGENOUS VISION

*IN THE SPIRIT OF RECONCILIATION, special care is being taken to ensure Indigenous voices are heard during the Britannia Renewal engagement process.*

## What we've heard...

These principles were identified by Aboriginal participants during two Indigenous-specific workshops, and many one-on-one conversations.

**Note:** the particular Indigenous spaces and places ideas that we heard, can be found woven throughout the other Space and Places boards (Food, Arts + Culture etc.).

**ACKNOWLEDGE** Musqueam, Squamish and Tsleil-Waututh traditional territory, protocols, customs, and their role as hosts.

**LANGUAGE** is a very important link to culture and identity.

**INTERDEPENDENCE** between land and life.

**RESPECT** – for the land, others, and oneself

### RESPONSIBILITY

- Taking care of elders and children
- Caring and protecting the land - leave it better than when you arrived
- Generosity and gratitude
- Sharing, not possessing

### RELATIONS

- Welcoming all people
- Encourage togetherness – gathering, food, cooking and sharing
- Importance of intergenerational life and learning

### REVERENCE

- Importance of a spiritual dimension, circle of life and death, and the earth
- Spiritual life is integral to everyday

**Aboriginal community engagement is particularly important to this project because:**

- Grandview-Woodland has the second highest proportion of Aboriginal residents in the City
- Aboriginal community has been historically under-engaged

**The Grandview-Woodland Community Plan specifies that:**

- Elements of Aboriginal culture be included in future design of the community centre
- Efforts be made to support reconciliation and enhance social facilities, programs and cultural activities for Aboriginal people



*"I want to practice my culture at Britannia"*

# SHARED VALUES

*WHILE DIVERSE, THE COMMUNITY OF BRITANNIA as a whole, embraces cohesive shared values.*

## What we've heard...

Key themes emerged during the community engagement that were commonly held to be of prime importance in the renewal of Britannia:

### TAKE ACTION ON RECONCILIATION

Throughout the community engagement we heard time and time again from the whole community that they want to see Indigenous perspectives, history and values represented and celebrated. Top priorities identified are:

- Acknowledge local Coast Salish First Nations traditional territory and their role as hosts
- Honour and recognize place both indigenous and recent history
- Language matters - link to culture and identity

### SHARING AND CARING

- Enable shared experiences, cultures, knowledge and resources
- Encourage togetherness

### BE ACCESSIBLE, WELCOMING, AND SAFE FOR ALL

- Celebrate diversity
- Accessible - physically + financially

### SUPPORT WELL BEING AND GROWTH OF THE INDIVIDUAL AND COMMUNITY

- Support belonging – home away from home
- Support social activism + engagement
- Honour and support elders/seniors
- Foster intergenerational life and learning
- Cherish and nourish children and youth
- Support families

### OPTIMIZE RESILIENCE AND SUSTAINABILITY

- Respect and enhance the natural world
- Regenerative Design: leaving the environment in a better state than when you arrive
- Resilient: Flexible and adaptive to change
- Recycle and reuse
- Show leadership in social, financial and environmental sustainability

*"Important that everyone feels welcome and safe"*

*"Community is at the heart of Britannia"*





# FOOD HUB

**FOOD IS CENTRAL TO THE DNA OF BRITANNIA.** Every group we met with expressed the need for a food hub to provide healthy food on site and as a vehicle for sharing.

## What we've heard...

### Ideas for Food Hub Space:

#### COMMUNITY KITCHEN

- Large commercial kitchen complete with servery, pantry, cold storage and walk-in freezer
- Suitable for preparing meals for community, cooking classes, community programs

#### COMMUNITY DINING HALL

- Shared meals
- Celebrations
- Rentals - Banquet facility
- Connection to outdoor gathering space

#### COMMUNITY GARDENS

- Garden to support Britannia food programs
- Urban farm
- Explore Rooftop gardens
- Harvesting corridors
- Herb garden
- Indigenous plants and medicinals
- Beehives

#### CLASSROOM

- Support education programs

#### GREENHOUSE

- Year round food production for community kitchen and food programs
- Connect to school programs

#### OFFICE SPACE

- Staff space for up to 5 positions

#### OUTDOOR COOKING

- BBQ pit, pizza oven
- Support outdoor gathering + land based learning

ADVOCACY

DIGNIFIED  
FOOD ACCESS

FOOD  
SHARING

FOSTER COMMUNITY  
CONNECTIONS

GROWING

NUTRITION  
EDUCATION

LEARNING

FOOD SECURITY  
AND RESILIENCE

COOKING

LAND-BASED  
LEARNING



CULTURAL SHARING



SHARING HARVESTS



LIFE SKILLS



SUPPORT EDUCATION PROGRAMS



GROW FOOD - BUILD RESILIENCE



SHARING MEALS

**POLICY FRAMING:** A key goal of the City's Healthy City Strategy is to feed ourselves well through a healthy, just, and sustainable food system. The strategy also seeks to create a system for producing, processing, distributing, and consuming food that is environmentally, socially, and economically sustainable. The Grandview-Woodland Community Plan looks to provide access to healthy and affordable food through enhancing local, community-based food assets and programs and to specifically to ensure the Grandview-Woodland Food Connection Neighbourhood Food Network is well supported and has necessary space. Opportunities to better support culturally-based food-related programs are also encouraged.

# LIBRARY

**A LIBRARY IS MORE THAN JUST BOOKS...** Public libraries are the free, go-to venue for learning, creativity and innovation.

## What we've heard...

### Ideas for Library Space:

#### INFO DESK / SERVICE AREA

- Welcoming and easy to access
- Good site lines of entire library floor

#### COLLECTIONS

- Portion of stacks to be movable to accommodate large gathering
- New, rich and diverse collections of books, magazines, DVDs, newspapers and digital collections in English and other languages

#### ADULT AREA

- Reading lounge - comfortable seating

#### TEEN AREA

- Dedicated spaces for youth

#### CHILDREN'S AREA

- Story Circle
- Early learning and literacy spaces for children, families and caregivers

#### MULTI-PURPOSE ROOM

- Flexible meeting, programming and community gathering spaces
- Usable after hours
- Openable to general library space

#### STUDY SPACES

- Smaller acoustically separated breakout rooms for quiet study, group study or small meetings

#### COMPUTERS

- provide enough spaces to accommodate high demand

#### CREATIVE DIGITAL LAB

- Capture stories, record or play music, and self-publish



COMFORTABLE SEATING



MULTI-PURPOSE ROOM



ADJUSTABLE ACTIVITY SPACES



FLEXIBLE SPACE - MOVABLE STACKS



DIGITAL LEARNING LAB



CHILD FRIENDLY SPACES



INDIVIDUAL AND GROUP STUDY

COMMUNITY SPACES FOR REFLECTION, CONTEMPLATION & LEARNING

SUPPORT FAMILIES

LOTS OF COMFY SEATING

COMMUNITY MEETING PLACE

FREE PUBLIC COMPUTERS AND WI-FI

INTERGENERATIONAL LEARNING

WELCOMING SPACE TO LEARN, CONNECT AND GROW

INCLUSIVE AND ACCESSIBLE

GATHERING PLACE FOR THE WHOLE COMMUNITY

*"Children grow up in communities, not programs. Let's build the village to raise a child"*

*"Strong libraries contribute to vibrant communities"*



# SOCIAL DEVELOPMENT

**BRITANNIA IS A HOME AWAY FROM HOME.** Supporting vulnerable individuals, and ensuring programming is as diverse and inclusive as the community it supports is key to the heart of Britannia.

## What we've heard...

### Ideas for Social Development Space:

#### SHARED SPACES

- Activity / Games Room
- Fireside Lounge
- Meeting Room - small, medium, large
- Multi-purpose Program Rooms
- Health Clinic - close to youth and seniors space

#### EARLY CHILD DEVELOPMENT

- Family place to continue operations
- 0-4 Childcare, 5-12 Out of School Licensed Non-profit Care
- Child Minding to support family access to programs and facilities

#### ELDERS IN RESIDENCE OFFICE

- Consider an Elders-in-Residence program to:
  - Provide guidance, cultural and spiritual support to community members
  - Share their knowledge and expertise through cultural teaching activities
  - Guide BCSC programming and reconciliation efforts
  - Large enough to hold meetings, highly visible

#### YOUTH SPACE

- Dedicated and supportive of boisterous activity, with the ability to personalize the space
- Access from exterior

#### SENIORS/ELDERS SPACE

- Dedicated, acoustically separated space for seniors programming
- Consider Adult Day Centre

#### SERVICE PROVIDER / ADMINISTRATION OFFICES

- Offices to house Social and Cultural Service Providers + BCSC Admin Staff
- Meeting space

#### SOCIAL/CULTURAL NON-PROFIT HUB

- Co-located, shared, multipurpose office and programming space for social, cultural and recreational groups
- To ensure BCSC can continue to provide space for community groups serving Grandview-Woodlands
- Include dedicated office space for partner organizations along with shared programming space

#### INTERGENERATIONAL APPROACH

#### BELONGING

SUPPORT SENIORS

MULTI-PURPOSE MEETING + ACTIVITY SPACE

SUPPORT VULNERABLE INDIVIDUALS + GROUPS

SUPPORT YOUTH

SUPPORT ADVOCACY + SOCIAL INNOVATION

ELDERS IN RESIDENCE



**POLICY FRAMING:** The City of Vancouver's Healthy City Strategy acknowledges health is about much more than just physical health or treatment in the health care system; it is about the social determinants that shape well-being in a broader sense. The Grandview-Woodland Community Plan looks to support many activities, including expanding facilities and services for youth; ensuring a range of services and a spectrum of care for seniors; supporting newcomer and settlement services; enhancing program space for LGBTQ2S+ communities; and, improving and increasing childcare facilities and services to support families with children.

# ARTS + CULTURE

**ARTS AND CULTURE IS AT THE HEART OF BRITANNIA** — ingrained and interwoven in all that Britannia does.

## What we've heard...

### Ideas for Arts + Culture Space:

#### INDIGENOUS COMMUNITY SPACES

- Maintain and enhance the ʔxwq̓w̓el̓ew̓en̓ ct carving pavilion
- Indigenous event + gathering space to practice culture, e.g. witnessing, intergenerational learning, drumming, dancing, and sharing stories,
- Space to support Indigenous ceremony, including smudging, sweat lodge, etc.
- Elders in residence
- A gathering space that can also serve wider community members (close to food prep area/kitchen)
- Indigenous arts creation and exhibition spaces

#### PUBLIC ART

- Indigenous
- Community-engaged projects
- Site-specific
- Integrated throughout new centre

#### DEDICATED ARTS STUDIOS

- Studios for ceramics, craft,
- 2D studios for painting, print-making, etc., with spaces for open-air drying
- Media studio for film, animation, photography, recording, etc.
- independent access for afterhours use
- Lockable storage

#### EXHIBITION SPACES

- gallery space for curated exhibitions, large enough for 3D works and group shows and located in a highly visible place (with professional level lighting, walls, air quality)
- Provide additional exhibition and showcase opportunities throughout the entire facility

#### REHEARSAL SPACES

- Large studio space suitable for dance, capoeira, large musical groups properly equipped with sprung floor, sound system, mirrors, etc.
- Smaller rehearsal/practice spaces, and sound-proofed for music practice
- Recording studios

#### MULTI-PURPOSE SPACE

- Multi-purpose space with movable walls
- Storage centralized and accessible

#### PERFORMANCE SPACE

- 125 - 200 seat black box theatre space for many disciplines, with retractable/moveable seating
- Outdoor gathering and performance space
- Storage for props, seating, lighting, risers etc.
- Green rooms and dressing rooms

#### SPACES TO SUPPORT ARTISTS:

- Shared production space for artists
- Artists in Residence studios
- Housing

#### ADMINISTRATION SPACE

- Offices for non-profits and community groups

#### COMMUNITY-ENGAGED PUBLIC ART

INTEGRATE INDIGENOUS LANGUAGE, CULTURE AND ART

CREATIVE SPACE FOR ALL AGES AND CULTURES, ESPECIALLY FOR INTERGENERATIONAL INTEGRATION

SUPPORT ARTISTS AND ORGANIZATIONS

AFFORDABLE AND ACCESSIBLE



ACTIVATED OUTDOOR SPACES



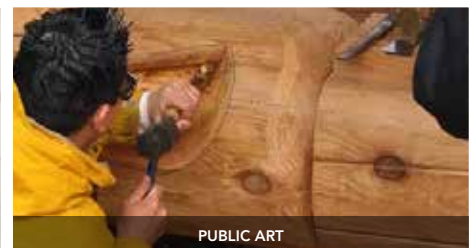
SUPPORT INDIGENOUS CULTURE



DEDICATED CREATION SPACES



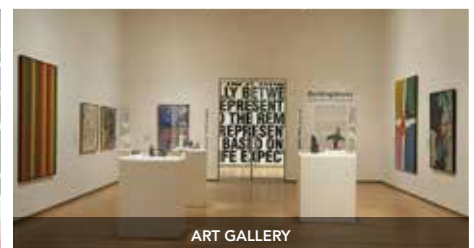
DANCE STUDIOS



PUBLIC ART



BLACKBOX THEATRE



ART GALLERY

**POLICY FRAMING:** The City of Vancouver Culture Plan goal is to support a diverse and thriving cultural ecology. The Park Board holds a vision of a city where the arts are an integral part of everyday life. The Grandview-Woodland Community Plan contains policy that aims to "create new arts and cultural spaces to address community needs"; "increase the amount and diversity of art in public places"; and, "support Musqueam, Squamish, and Tsleil-Waututh First Nations and urban Aboriginal cultural expression and activities and public art."



# RECREATION

**BRITANNIA IS A SPACE FOR ACTIVE LIVING.** Inclusive, accessible recreation services increase physical literacy and create community through sport. Active citizens build a healthy city for all ages.

## What we've heard...

### Ideas for Recreation Space:

#### Aquatics\*

##### POOLS AND WATER FEATURES

- 25m with 8 lanes, ramp entry, deep end diving space
- Leisure pool beach entry, lazy river + fun features!
- Splash pad/Spray park outside, flume style slide
- Whirlpool

##### POOL DECK

- Dry viewing and training, showers, lounge space for relaxing

##### SPA FACILITIES

- Steam and Sauna as part of pool, Sweat Lodge outside connected to change rooms

##### CHANGE ROOMS

- Large universal change rooms with showers, storage etc.
- Provide choice of gendered and non-gendered space

#### Gymnasia / Fitness / Multi-purpose

##### GYMNASIA

- Multi-use space to accommodate a wide range of activities
- Good storage, sprung athletic floor, wood finishes
- Access to change rooms

##### GYMNASTICS

- Dedicated space and annex to gym for hard to move equipment

##### INDOOR TRACK ABOVE GYM

- Supports seniors exercise programs, community walking and running, and exercise alternate in inclement weather

##### MULTI-PURPOSE STUDIOS

- Flexible and divisible space for a wide range of activities

##### SPECIALIZED SPACE

- Boxing, martial arts, spin and climbing wall
- Specific fitness studios for aerobics, spin and low intensity exercise

#### Rink / Arena\*

##### ICE SURFACE

- Maintain excellent quality of ice
- More ice time - 2 rinks if possible

##### SEATING + VIEWING

- Retractable seating to free up floor for teaching space adjacent to ice level

##### SKATE LOBBY + MULTI-PURPOSE SPACE

- Warm viewing areas with spacious lobby
- Room for parties, meetings, team gatherings, etc.

##### CHANGE ROOMS

- Universal change rooms, cubbies and shelves, accessible showers, change benches on castors

##### STORAGE

- Public activity, program and seasonal equipment
- Gear storage and drying for hockey academy / other groups



GROUP FITNESS CLASSES



UNIVERSAL CHANGE FACILITIES



VISUAL POROSITY



ICE RINK



MULTI-PURPOSE STUDIOS



CONNECT TO NATURE



MULTI-TANK POOL

\* Ultimately the size and composition of key recreation features such as the pool and the rink will be determined in the context of city wide facilities.

**POLICY FRAMING:** The Vancouver Park Board's guiding principles aim to create quality functional and flexible facilities that are inclusive and accessible for all citizens. This includes making priority trans and gender variant inclusion as well as gender neutral spaces and programs. A healthy city advocates for Sport for Life, emphasizing physical literacy and building community through sport. The Grandview-Woodland Community Plan looks to cluster recreational facilities and programming spaces, and, as part of the expansion of key community facilities like Britannia, seek additional flexible and/or purpose-built space for youth social, cultural, recreational, and other programming.

# SHARED PUBLIC SPACE

**SHARED PUBLIC SPACE IS CRITICAL 'SOCIAL GLUE'.** Community connections build a healthy city - working together makes us resilient and sustainable, we enjoy better health when we connect with our neighbours and are engaged in our communities.

## What we've heard...

### Ideas for Shared Public Space:

#### ENTRY

- Welcoming
- Easy to find
- Exciting

#### INFO CENTRE

- Easy to find and approachable
- One stop shop for registration, information, and admissions
- Providing concierge services for all aspects of the facility

#### COMMUNITY LIVING ROOM

- At the heart of the Centre
- An inclusive space to be comfortable and welcoming for all without participation in programs
- A place to hang out, for casual meeting, waiting, playing board games, chatting etc.
- Supported by a small kitchen to enable the community to prepare tea, coffee, and warm up food
- Comfortable chairs and tables that can be reorganized
- Access to outdoor space for children's play area
- Incorporate Children's play area within the Living Room

#### PUBLIC CONCOURSE

- Clear circulation spine to access all major program areas
- Places for waiting and viewing program areas





# PUBLIC REALM

**BRITANNIA NEEDS MORE GREENSPACE AND A CLEAR HEART.** *Britannia's public realm is envisioned as an attractive and dynamic space that reflects the importance of community, diversity, and ecology. People of all ages will gather here to socialize, create, work out or just hang out. Restorative green spaces will be balanced with active areas that are vibrant with art, culture, sports and play, the site.*

## What we've heard...

## Ideas for Public Realm Space:

## SOCIAL GATHERING AND OUTDOOR PROGRAMMING

- Scalable gathering, and performance spaces for large and small audiences
- Variety of outdoor seating areas, from informal benches to table and chairs
- Social spaces that highlight views
- Multi-purpose passive lawn areas for flexible use

## GREENSPACE AND ECOLOGY

- Food production
- Multiple gardens
- Green corridors
- Nature integrated throughout site
- Stormwater collection for re-use on site
- Efficient use of resources
- Naturalized areas / habitat areas
- Future development areas (flexible, open space for community-led development)
- Urban forestry - places for large trees
- Pollinator gardens

## ARTS, CULTURE AND FOOD

- Community-engaged public art: temporary and permanent works
- Food gardens (see 'food hub')
- Indigenous and pollinator gardens
- Covered courtyard / eating areas
- Outdoor program areas (flex spaces for interior activities to "spill outside")
- Outdoor work stations (work tables with water and electrical access)
- Outdoor storage

## VIEWS, CIRCULATION AND SAFETY

- Universal site access
- Interior/exterior connections
- Bike route connections
- Bike parking & bike-share
- Stroller parking
- Storage space
- Service Vehicle Access
- Emergency Vehicle Access
- Drop off / lay-by parking
- Vehicle & car-share parking
- Electric charging stations
- Connection to surrounding site



▲ *Highschool Student vision for Britannia's Public Realm*  
Word cloud representing ideas generated in the Britannia Secondary School Public Realm Workshop. The size of the words reflect the popularity of the idea (see detailed Meeting Notes for more information).

**POLICY FRAMING:** Public Realm policies identified in the Grandview-Woodland Community Plan include creating new plazas to support public gathering and enhance existing gathering spaces; enhancing existing parks to improve their quality, diversity, and usability; enhancing public realm infrastructure; and exploring opportunities to expand park space. The plan also seeks to preserve and enhance habitat and biodiversity, and to celebrate the 'grand views' of the city.

# OUTDOOR PLAY + RECREATION

**BRITANNIA SHOULD BE A GREAT PLACE FOR PLAY.** There is a clear desire for play and sports in the public outdoor places for all ages and abilities. With the large school population on site, there is a desire for an intermediate playground to offer challenging play opportunities for the elementary school students, while high school student emphasized social spaces for hanging out, and high-quality sports fields.

## What we've heard...

### Ideas for Outdoor Play + Recreation Space:

#### OUTDOOR RECREATION

- Highschool soccer field
- Tennis Courts
- Basketball Courts
- Running track (regulation-size or informal and integrated with looped walking paths)
- Looped walking paths
- Multi-generational amenities such as outdoor workout equipment

#### PLAY

- Outdoor play areas for young children
- Preschool / Daycare outdoor play area
- Elementary school outdoor play areas (primary and intermediate)
- Water play / splash pad
- Playful site elements throughout the site
- Play features that engage youth

#### STRATEGIES

- Provide engaging spaces for children and youth
- Use play and recreation to help animate the site
- Integrate playful spaces in major public gathering areas
- Integrate play and recreation spaces with greenspace

zipline  
school  
vending  
room  
field  
intermediate  
playground  
basketball  
garden  
trampolines  
grass  
net  
hiding  
secret  
waterpark  
machines  
soccer  
nets  
pingpong  
pool  
statue  
mascot  
climber  
rotating  
pingpong  
outdoor  
pool  
machines

▲ Elementary Student vision for Britannia's Public Realm Word cloud representing ideas generated in the Britannia Elementary School Public Realm Workshop. The size of the words reflect the popularity of the idea (see detailed Meeting Notes for more information).



**POLICY FRAMING:** The Grandview-Woodland Community Plan looks to cluster recreational facilities and programming spaces. As part of the expansion of key community facilities like Britannia, the plan also seeks to develop additional flexible and/or purpose-built space for youth social, cultural, recreational, and other programming.



# HOUSING

**HOUSING IS BEING CONSIDERED** as part of the mix of public benefits on the Britannia site.



*Add your voice to the conversation!*

**A Housing World Cafe was held on the 21st of September to bring the community into the conversation. Results from this session can be viewed on the adjacent display.**

## **POLICY FRAMING**

### **The Grandview-Woodland Community Plan directs City staff to:**

*"Seek new non-market housing opportunities as part of Britannia Community Centre renewal"*

*"Seek ways to mobilize air space parcels in the Britannia site to achieve plan objectives for social housing through co-location with other public facilities, provided there is no loss of green space."*

*"Include the delivery of mixed income non-market rental housing on this City-owned site as part of the redevelopment and replacement of the community centre over the long term."*

The community conversation on housing on the site has begun. The Britannia Community Services Society's Planning and Development Committee has formed a Housing Working Group that has been exploring the conditions under which they feel housing would be appropriate on site. Below are the principles that the Housing Working Group has identified:

1. All land on the Britannia site must continue to be 100% publicly owned.
2. Any potential housing must be 100% affordable non-market social housing.
3. Any potential housing should be planned and designed as a complement to the existing primary purpose of the Britannia site as a community amenity and resource. Housing should be purpose-built and managed for a diverse tenancy that reflects the unique character of the neighbourhood and can benefit from the supports and services available on site and participate in the development of a healthy, inclusive community.
4. Any potential housing should be designed with a clear demarcation of housing and community space in order to maintain the feeling of privacy and security for residents as well as the sense of welcome and belonging for the whole community.
5. In keeping with the commitment of the Britannia partners to community leadership, any potential housing should be operated with a management model that supports ongoing resident engagement in their tenancy and in the broader Britannia site.
6. Any potential housing should be managed in strong collaboration with Britannia site partners, working with residents and the broader community to develop and maintain a symbiotic relationship between the community resources and housing on site.
7. Any potential housing should be designed to maximize public greenspace.
8. Any potential housing should be designed to preserve mountain and city views from across the site.
9. Any additional adjacent land acquired to extend the site should also be considered as a location for additional affordable non-market social housing.

*These principles were created by the Planning and Development Committee's Housing Working Group as a framework for discussion about potential housing on the Britannia site as part of a larger community consultation process involving all Britannia site partners, local residents and community members, and other neighbourhood stakeholders. These principles should be understood in the context of Britannia's existing land use principles (March 2017), as well as broader community directions arising from the 2016 Grandview-Woodland Community Plan.*



# WHAT'S NEXT?

## BRITANNIA RENEWAL VISION

Fall 2017

Later this month, we will be compiling a Vision document that summarizes the first phase of the Britannia Renewal project. The document will be available for project partners, community members, and other project stakeholders to review. Watch for copies at the B-LAB!

## BRITANNIA RENEWAL OPTIONS

Winter 2017

In early December, we will be coming back to the community with renewal options to consider. These options will test the site and space fit for all desired spaces and identify any trade-offs and considerations as we work to develop a facility plan that accounts for the diverse needs and aspirations of the community.

## BRITANNIA RENEWAL PLAN

Spring 2018

Based on community and Partner feedback on the renewal options, a final plan will be prepared and shared with the community. The completed Britannia Renewal Plan will include:

- A community vision to guide future Britannia Renewal work
- Facilities requirements identifying the different spaces for indoor and outdoor recreation, social development, arts & culture, and lifelong learning required to meet future needs at Britannia
- A master plan with phasing, outlining which components and features will be developed first and where over the multi-year renewal

The Master Plan will identify the first phase of work to begin detailed design in 2018. There is \$25 million that has been allocated by City for this work at this time.

**WE ARE HERE!**

### Project Process

